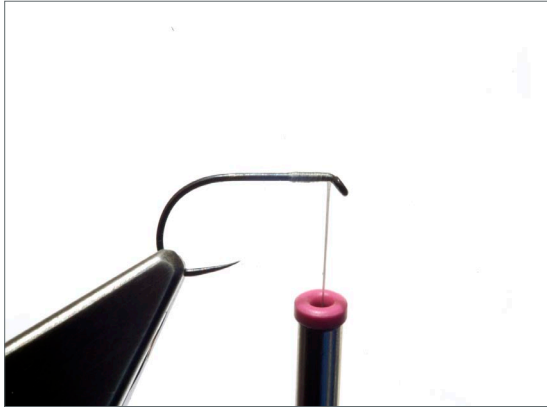
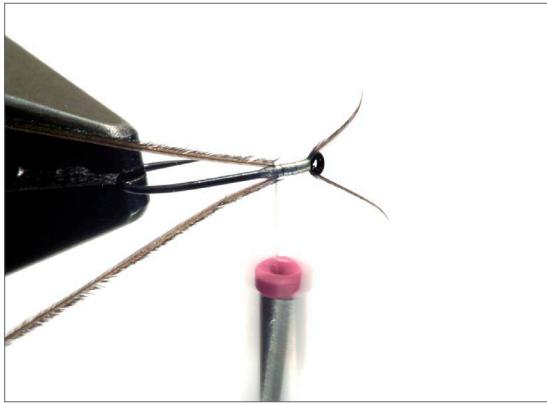


## VIRTUAL NYMPH FLYTYING HOW TO USE VIRTUAL NYMPH COLEOPTERA BODY



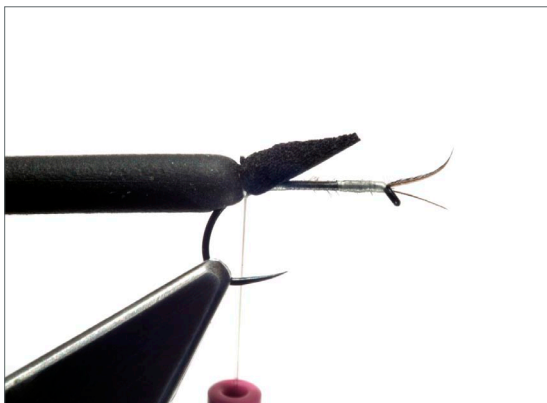
STEP 1 - Nip a wide gape, short shank hook into the vice. "I have used a Tiemco 103BL #15". Tie on your thread and wind back to the hook eye.



STEP 1 - Select two crow feather fibres and tie on to either side of the hook shank. " Notice how I have used the hook eye to stabilize the two antenna".



STEP 2 - Lay an even layer of thread down the shank and stop winding just passed the bend of the hook.

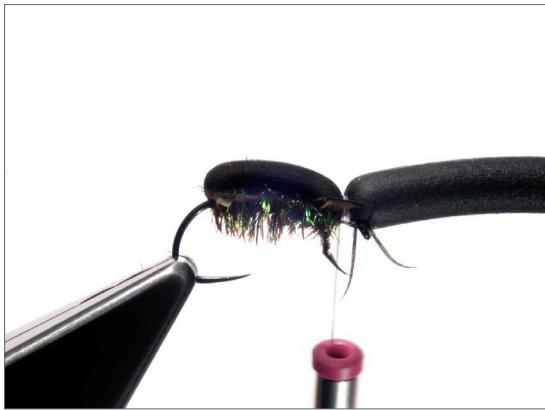


STEP 4 - Take a 2 - 3 inch length of Coleoptera Body and snip off a sharp point as seen in the illustration. Tie in with tight wraps where you ended your layer of thread. "Make sure this is tight, so when it comes to stretching over the body it does not move".

## VIRTUAL NYMPH FLYTYING HOW TO USE VIRTUAL NYMPH COLEOPTERA BODY



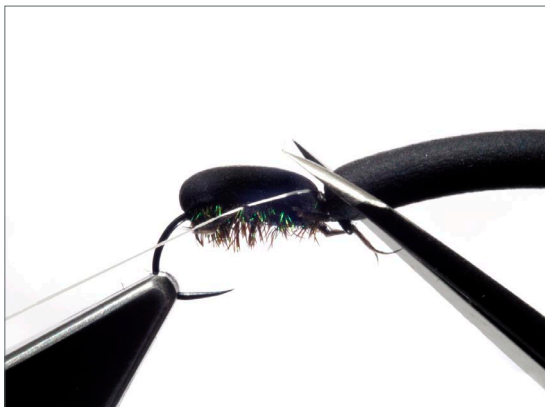
STEP 5 - Crush down the tag end with open turns of thread. *"Notice how it stops before the hook eye. This is the head area, which I have left clear of any bulk".*



STEP 6 - Tie in your legs and underbody work then pull over the Coleoptera Body. *"Make sure the hook is tight in the vice otherwise it will slip forward, or even ping out".* Stretch to shape and tie in with high tension 2 mm from behind the hook eye.



STEP 7 - At this point you can tie in a coloured tag if you so wish, for visibility. Tie off and colour the thread with a black pen. *"Make your tying off is 2 mm behind the hook eye as this is where the head sits after snipping".*



STEP 8 - Now, cut off the tag end with a 45 degree cut. Stretch the tag end as much as you can as this will give the head a curved shape after cutting. Make the snip and a perfect little head shape will be formed. Cut off the thread and your all done.

# FINISHED BEETLE

PLEASE NOTE THE ROUNDED HEAD EFFECT



Materials used.

HOOK - Tiemco I03BL or any other lightweight hook with a large gape and short shank. THREAD - VN-Dyneema. BODY - VN Coleoptera Body. UNDERBODY - Peacock herl. LEGS - Golden Pheasant centre tail. ANTENNAE - The tips of Crow feather slips.

The finished Leaf Beetle. I have called it a leaf Beetle as a generic name, because 95% of Beetles fall into our streams from trees and bankside foliage. You can tie in a loose black thread to promote the impression of a split wing case. If you so wish, *“tie it in when the first layer of thread goes down. Then pull it over the body and nip it in with your thread turns prior to tying off. It looks neat and realistic, but does not improve your catch rate, only your relationship with other flyfishers”*. When fished this pattern sits in the film and not on top, imitating the correct footprint. And, although it sits deep in the film there is still a dominant black dot that is still visible. Casting it as a single point fly under trees in high summer and late Autumn evenings, brings some great fishing when fly hatches are quiet. Full tying instructions are published in Masterclass CD. Vol 11